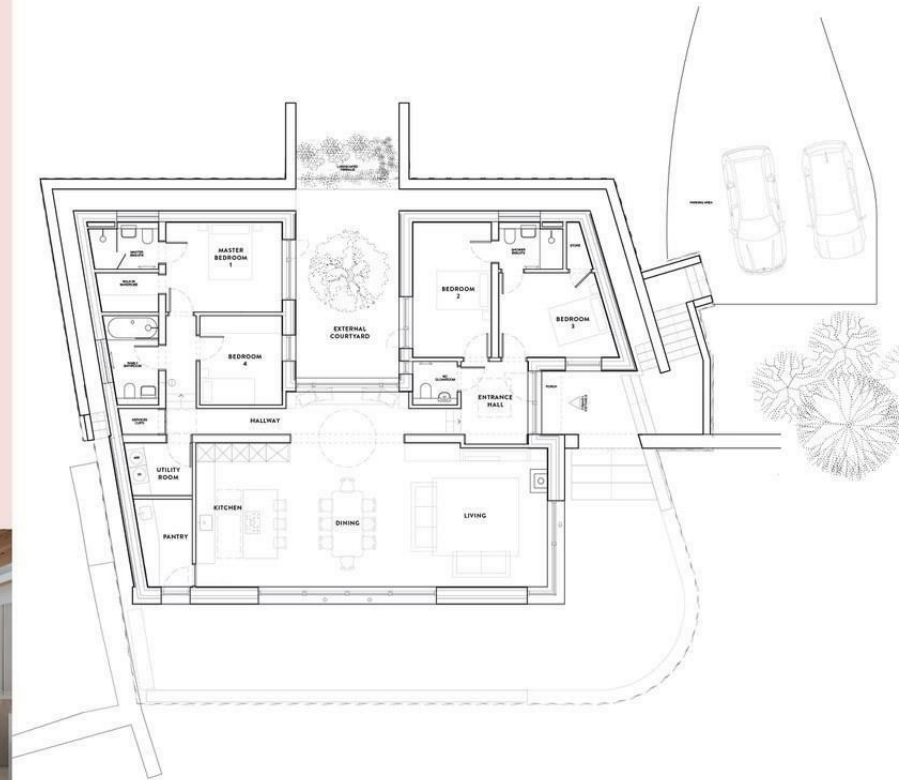


Boardwalk

PARK LANE, WINTERBOURNE

Kestrel View
WINTERBOURNE

APPROXIMATE FLOOR AREA
170 SQM / 1829 SQFT



Illustrations are for reference purposes only, measurements are approximate, not to scale.



Boardwalk

PARK LANE, WINTERBOURNE



£950,000



4 Bedrooms



BS36 1AS



4 Bathrooms

"We love how peaceful and private this plot is, tucked away down its own drive and with views of the horses in the fields opposite. The stone on the outside of the house was excavated when we built the foundations so it's made of very local materials and really blends into the hillside."

